

## Rio 2016 Olympic Sailing Competition

### SAILING INSTRUCTIONS

5-21 August 2016, Rio de Janeiro, Brazil

#### 1. RULES

*Additional Rules referenced in the Notice of Race or Sailing Instructions will be published on the World Sailing website ([www.sailing.org](http://www.sailing.org)), the International Olympic Committee website ([www.olympic.org](http://www.olympic.org)) or at the Rio 2016 website ([www.rio2016.com](http://www.rio2016.com)).*

- 1.1 The regatta will be governed by the rules as defined in *The 2013-2016 Racing Rules of Sailing* (RRS). Other documents under RRS Definition: Rule (g) include:
  - 1.1.1 The Olympic Charter and other governing documents of the International Olympic Committee (IOC).
  - 1.1.2 The Rio 2016 Olympic Sailing Competition Equipment Regulations (ER).
  - 1.1.3 The Rio 2016 Olympic Sailing Competition Competitions Area Regulations (CAR).
  - 1.1.4 The Rio 2016 Olympic Sailing Competition Support Team Regulations (STR).
  - 1.1.5 The Rio 2016 Olympic Sailing Competition Athlete Media Guide (AMG).
  - 1.1.6 Appendix P, Special Procedures for Rule 42. In RRS P1, change 'sail number' to 'national letters'.
  - 1.1.7 For medal races, World Sailing Addendum Q, Umpired Fleet Racing, will apply and takes precedence over any conflicting instructions.
- 1.2 No national authority prescriptions will apply.
- 1.3 Decisions of the International Jury will be final as provided in RRS 70.5.
- 1.4 For the Men's Skiff, Women's Skiff and Mixed Multihull, RRS 44.1 and RRS P2.1 are changed so that the Two-Turns Penalty is replaced by the One-Turn Penalty.
- 1.5 In all rules governing this regatta;
  - 1.5.1 [DP] denotes a rule for which the penalty is at the discretion of the International Jury;
  - 1.5.2 [SP] denotes a rule for which a standard penalty may be applied by the Race Committee without a hearing or a discretionary penalty applied by the International Jury with a hearing; and
  - 1.5.3 [NP] denotes a rule that shall not be grounds for protests by a boat. This changes RRS 60.1(a).
  - 1.5.4 Both 'athlete' and 'competitor' mean a person competing in the event.
  - 1.5.5 The term 'scheduled' means: As originally scheduled unless amended by a later notice to competitors.
- 1.6 RRS 63.7 is changed to read: 'If there is a conflict between *rules*, the protest committee shall resolve that conflict in the manner that it believes will provide the fairest result for all boats affected.'
- 1.7 If there is a conflict between languages the English text will take precedence.

## **2. [DP] [NP] SAFETY REGULATIONS**

- 2.1 Athletes shall wear personal flotation devices at all times while afloat, except briefly while changing or adjusting clothing or personal equipment.
- 2.2 Boats not leaving the harbour for a scheduled race shall promptly notify the Sports Information Desk.
- 2.3 [SP] Before leaving shore, athletes shall personally deposit their accreditation at the Omega cabin.
- 2.4 [SP] On returning to shore or when no more races are scheduled for that boat for the day athletes shall personally collect their accreditation at the Omega cabin within the protest time limit.
- 2.5 [SP] Athletes may personally collect their accreditation whenever they return to shore but shall personally deposit their accreditation again before leaving to race.
- 2.6 [SP] Before leaving shore to race, an athlete or support team member shall collect their tracking module at the Omega cabin.
- 2.7 [SP] When no more races are scheduled for a boat on that day, a boat representative shall deposit their tracking module at the Omega cabin within the protest time limit.
- 2.8 [SP] A boat that retires from racing shall notify the Race Committee before leaving the racing area if possible and shall complete a retirement declaration form at the Sports Information Desk as soon as possible after returning ashore.

## **3. [DP] CODE OF CONDUCT**

- 3.1 Athletes shall comply with any reasonable request from a regatta official.
- 3.2 Athletes shall handle any boats and equipment provided by the organizing authority with proper care and seamanship, without interfering with its functionality, and in compliance with the ER.
- 3.3 Athletes shall not in any way interfere with the functionality of supplied media or results equipment.
- 3.4 [SP] Boats not racing shall avoid the area where boats are racing and of any official boats.
- 3.5 [SP] Boats that are on a Course Area to which they are not assigned shall avoid the area where boats are racing and of any official boat.

## **4. COMMUNICATIONS WITH ATHLETES**

- 4.1 Notices will be posted on the official notice board located at the Sports Information Desk.
- 4.2 Notices will also be posted at [www.sailing.org/olympics/rio2016](http://www.sailing.org/olympics/rio2016). Failure to post a notice on the website will not be grounds for redress. This changes RRS 62.
- 4.3 When a visual signal is displayed over an Event flag, the signal applies only to that Event. This changes the Race Signals preamble.
- 4.4 Signals ashore will be displayed beside the launching ramps.
- 4.5 When flag AP is displayed ashore, '1 minute' is replaced with the times in minutes shown below in the race signal AP.

Race Area	Race Signal AP not less than time
Pão de Açúcar, Aeroporto and Escola Naval	45

Ponte	60
Copacabana and Niterói	75
Pai	90

- 4.6 [SP] [NP] A boat shall not leave the shore until flag D is displayed ashore. The warning signal will be made not less than the time in minutes shown below after flag D is displayed or not before the schedule time, whichever is later.

Race Area	Warning Signal not less than
Pão de Açúcar, Aeroporto and Escola Naval	45
Ponte	60
Copacabana and Niterói	75
Pai	90

## 5. CHANGES TO SAILING INSTRUCTIONS

- 5.1 Except for changes to the schedule of races and course assignments, changes to the Sailing Instructions will be posted no later than two hours before the scheduled time of the first race affected.
- 5.2 Any changes to the Sailing Instructions will be approved by a World Sailing Technical Delegate.

## 6. FORMAT OF RACING

- 6.1 The format for each Event consists of an opening series and a medal race.
- 6.2 Opening Series

For the opening series of each Event the number of races scheduled is as follows:

Event	Number of races	Maximum Races per Day
Men's One Person Dinghy Women's One Person Dinghy Men's One Person Dinghy Heavyweight Men's Two Person Dinghy Women's Two Person Dinghy	10	3
Men's Windsurfer Women's Windsurfer	12	3
Men's Skiff Women's Skiff Mixed Multihull	12	4

### 6.3 Medal Race

- 6.3.1 A medal race will be scheduled for each Event with 6 or more opening series races completed.
- 6.3.2 The ten boats ranked highest in the opening series will be assigned to compete in the medal race.
- 6.3.3 Initial assignments to a medal race will be based on the ranking available at 1800 the day before a medal race. Any changes to the initial assignments will be posted

by 0800 on the day of the medal race. The International Jury may extend these time limits.

## **7. [DP] COURSE AREAS AND COMPETITIONS AREAS**

- 7.1 The Course Areas are shown in SI Addendum A. The CAR will define the Competition Areas.
- 7.2 All boats shall remain in the Competition Areas at all times whilst afloat. No part of a boat shall cross the boundary. While a boat is racing, the boundary ranks as an obstruction.
- 7.3 If any part of a boat crosses the boundary of the Competition Areas, she may be subject to security quarantine and search before being permitted back in to the Venue.

## **8. SCHEDULE OF RACES AND COURSE AREA ASSIGNMENTS**

- 8.1 The race schedule, including the time of the first warning signals and assignment of Events to Course Areas is shown in SI Addendum B.
- 8.2 The Race Committee will post the assignment for each Event on a daily basis, no later than 2000 the previous evening.
- 8.3 The Race Committee may reassign an Event to any Course Area no later than two hours before the scheduled starting signal. However;
  - 8.3.1 When flag AP is displayed ashore, the course area may be changed until 15 minutes before the AP is removed; and
  - 8.3.2 when flag AP is displayed afloat, the course area may be changed. The race committee signal boat will display flag L over the Event(s) flag and move to the new Course Area.
- 8.4 Races not sailed on the scheduled day may be sailed on a following day at the discretion of the Race Committee, including sailing an opening series race on the provisional medal race or reserve medal race day.
- 8.5 If less than six opening series races are completed before the last reserve day for each Event, the opening series will continue that day.
- 8.6 A medal race will not be scheduled on the same day as an opening series race for that Event.
- 8.7 No warning signal will be made after 1700 for an opening series race. No warning signal will be made after 1630 for a medal race.

## **9. THE COURSES**

- 9.1 Courses will be windward / leeward or trapezoid with optional finishing legs. The diagrams in SI Addendum C show the courses, the course designations, the approximate angles between legs, the order in which marks are to be passed, and the side on which each mark is to be left.
- 9.2 No later than the warning signal, the race committee starting vessel will display the course signal and, except for Men's Windsurfer and Women's Windsurfer events, the approximate compass bearing of the first leg.

## **10. MARKS**

- 10.1 Marks 1, 2, 3, and 4, offset, or associated gate marks, will be as follows:

Course Area	Marks 1, 2, 3, 4	New Mark	Inflatable Starting	Inflatable Finishing
-------------	------------------	----------	---------------------	----------------------

			Line Mark	Line Mark
Pão de Açúcar	Red cylindrical	Red with black strip cylindrical	Red cylindrical	Red cylindrical
Escola Naval	Yellow cylindrical	Yellow with black strip cylindrical	Yellow cylindrical	Yellow cylindrical
Aeroporto	Orange cylindrical	Orange with black strip cylindrical	Orange cylindrical	Orange cylindrical
Ponte	Green cylindrical	Green with black strip cylindrical	Green cylindrical	Green cylindrical
Copacabana	Red cylindrical	Red with black strip cylindrical	Red cylindrical	Red cylindrical
Niterói	Orange cylindrical	Orange with black strip cylindrical	Orange cylindrical	Orange cylindrical
Pai	Blue cylindrical	Blue with black strip cylindrical	Blue cylindrical	Blue cylindrical

10.2 Offset marks will be the same as Mark 1, 2, 3, 4.

10.3 Marks S1, S2, and S3, or associated gates, will be same as Marks 1, 2, 3, 4.

10.4 The starting and finishing line marks will be race committee vessels or inflatable marks.

## 11. EVENT FLAGS

Event flags will be class insignia on the following background:

Event	Class Insignia	Background Colour
Men's Windsurfer	RS:X	White
Women's Windsurfer	RS:X	Light Blue
Men's One Person Dinghy	Laser Standard	White
Women's One Person Dinghy	Laser Radial	Light Blue
Men's One Person Dinghy Heavyweight	Finn	White
Women's Two Person Dinghy	470	Light Blue
Men's Two Person Dinghy	470	White
Men's Skiff	49er	White
Women's Skiff	49er FX	Light Blue
Mixed Multihull	Nacra	White

## 12. THE START

12.1 The starting line will be between a staff displaying an orange flag on the race committee vessel at the starboard end and either

- 12.1.1 the course side of the port-end inflatable starting mark, or
- 12.1.2 a staff displaying an orange flag on the race committee vessel at the port end.
- 12.2 [DP] A buoy may be attached to the race committee starting vessel anchor line just below keel depth. Boats shall not pass between this buoy and the race committee starting vessel at any time. This buoy is part of the race committee starting vessel ground tackle.
- 12.3 [DP] When a starting sequence is in progress, boats whose warning signal has not been made shall avoid the starting area. The starting area is defined as the area 50 meters from the starting line and marks in all directions.
- 12.4 Races will be started by using the following signals. Flags P, U and Black are not preparatory signals. This replaces the table in RRS 26 and changes Preparatory signals in Race Signals.

<i>Minutes before starting signal</i>	<i>Visual signal displayed</i>	<i>Visual signal removed</i>	<i>Sound signal</i>	<i>Means</i>
6	Class flag			Class to start
	P, U, or Black flag			Starting Penalty P = None
	O flag, if applicable			RRS P5 (RRS 42)
5	White flag with number 5		One	Warning signal
4	Blue flag with number 4	White flag	One	Preparatory signal
3	Pink flag with number 3	Blue flag	One	Three minutes
2	Red flag with number 2	Pink flag	One	Two minutes
1	Yellow flag with number 1	Red flag	One long	One minute
0	Green flag	Yellow flag	One	Starting signal
+1		Green flag, Class flag, P, U or Black flag, O flag	No sound	

- 12.5 If flag U has been displayed, no part of a boat's hull, crew or equipment shall be in the triangle formed by the ends of the starting line and the first mark during the last minute before her starting signal. If a boat breaks this rule and is identified, she shall be disqualified without a hearing but not if the race is restarted or re-sailed. This changes RRS 26 and A5. When flag U is displayed RRS 29.1 does not apply. The scoring abbreviation for a flag U penalty is UFD. This changes RRS A11.

- 12.6 To alert boats that a race or sequence of races will begin soon, the orange starting line flag will be displayed with one sound at least five minutes before a warning signal is made.
- 12.7 The warning signal for each succeeding race will be made as soon as practicable.
- 12.8 In RRS 30.3, change 'sail number' to 'national letters'.
- 12.9 If a boat does not start correctly and then rounds the first mark of the course, the Race Committee may display flag X make sound signals and display her national letters and Event flag in the vicinity of any mark. When so notified, the boat shall immediately retire from the race. If she fails to do so, she will be disqualified without a hearing and her score will not be excluded. This changes RRS A5.

### **13. COURSE CHANGES**

- 13.1 To change the next leg of the course, the Race Committee will (a) lay a new mark, or (b) move the finishing line, or (c) move the leeward gate. When a new mark is laid, the original mark will be removed as soon as possible. When in a subsequent change a new mark is replaced, it will be replaced by an original mark. When Mark 1 has been replaced, Mark 1a will not be reset. This changes RRS 33.
- 13.2 Courses will not be shortened. This changes RRS 32.

### **14. THE FINISH**

- 14.1 The finishing line will be between a staff displaying an orange flag on the race committee vessel and either:
- 14.1.1 the course side of the nearby inflatable finishing mark, or
- 14.1.2 a staff displaying an orange flag on the nearby race committee vessel.

### **15. TIME LIMITS AND TARGET TIMES**

- 15.1 For opening series, time limits and target times in minutes are as follows:

Event	Time Limit	Mark 1 Time Limit	Finish Window	Target Time
Men's Windsurfer	45	20	10	20-25
Women's Windsurfer	45	20	10	20-25
Men's One Person Dinghy	75	25	15	50
Women's One Person Dinghy	75	25	15	50
Men's One Person Dinghy Heavyweight	75	25	15	50
Men's Two Person Dinghy	75	25	15	50
Women's Two Person Dinghy	75	25	15	50
Men's Skiff	50	20	10	30
Women's Skiff	50	20	10	30
Mixed Multihull	50	20	10	30

- 15.2 For medal races, time limits and target times in minutes are as follows:

Class	Time Limit	Mark 1 Time Limit	Finish Window	Target Time
Men's Windsurfer	40	10	10	20
Women's Windsurfer	40	10	10	20
Men's One Person Dinghy	40	15	10	25
Women's One Person Dinghy	40	15	10	25
Men's One Person Dinghy Heavyweight	40	15	10	25
Men's Two Person Dinghy	40	15	10	25
Women's Two Person Dinghy	40	15	10	25
Men's Skiff	40	10	10	20
Women's Skiff	40	10	10	20
Mixed Multihull	40	10	10	20

- 15.3 If no boat has passed Mark 1 within the Mark 1 Time Limit the race shall be abandoned.
- 15.4 Boats failing to finish within the time stated in the Finish Window after the first boat sails the course and finishes will be scored Did Not Finish. This changes RRS 35, A4 and A5.

## 16. **[DP] EQUIPMENT AND EQUIPMENT INSPECTION**

- 16.1 The Equipment Inspection Committee (EIC) is responsible for all equipment inspection functions. The Chairman of the EIC may appoint one or more panels or persons to carry out the functions of the EIC.
- 16.2 Details of equipment inspection are specified in the ER.
- 16.3 470 and Finn boats shall produce a valid measurement certificate. RRS 78.2 is deleted and replaced by: When a rule requires a valid certificate to be produced or its existence verified the certificate must be produced before the boat races. If the certificate is not produced or verified before the boat races the boat shall be disqualified from all races of the event.
- 16.4 While all reasonable steps are taken to equalize the equipment supplied by the Organizing Authority variations between equipment shall not be grounds for redress. This changes RRS 62.
- 16.5 Failure of equipment supplied by the Organizing Authority shall not be grounds for redress, unless, in the opinion of the International Jury, it was the result of a manufacturing defect that could have been reasonably anticipated by the Organizing Authority. This changes RRS 62.
- 16.6 Add RRS 60.4. 'The EIC may protest a boat for a breach of a class rule, rule 43, rules relating to personal equipment, SI 3 or a rule of the Equipment Regulations. The Equipment Inspection Committee may report an alleged breach of other rules to the Race Committee.'
- 16.7 Delete RRS 43.1(c) and 78.3. In RRS 60.2 delete: 'However, when the Race Committee receives a report required by rule 43.1(c) or 78.3, it shall protest the boat.'
- 16.8 Throughout RRS 61 replace 'race committee' with 'race committee or equipment inspection committee'.



- 16.9 The substitution of equipment will not be permitted unless approved by the EIC in accordance with the ER. The EIC will decide on requests for approval on behalf of the Race Committee under any applicable class rules.
- 16.10 As permitted by RRS 87 changes to class rules are detailed in NoR 3.2, NoR Appendix 4 and the Equipment Regulations.

## **17. OFFICIAL BOATS**

- 17.1 Official boats will be marked as follows:

Competition Manager	White Flag with "Competition Manager" in green
Equipment Support	Blue Flag with "Gear" in white
Equipment Inspection	Purple Flag with "Measurer" in white
First Aid	White Flag with "Rescue" in red
Jury	Blue Flag with "Jury" in white
Marshalls	White Flag with "Marshall" in red
Media: Olympic Broadcasting Services	Green Flag with "OBS" in white Extra Yellow Flag with "OBS" green that allows this boat to go into the Course Area
Media: Photo and written press	Green Flag with "Media" white
Media: other broadcasting services	Green Flag with "OBS" in white
Olympic Family	White Flag with "Olympic Family" green
Omega results services	Blue Flag with "Repeater" in white
Principal Race Officer	White Flag with "IRO" in green
Rescue	White Flag with "Rescue" in red
Technical Delegates	With Flag with "Technical Delegate" in green
World Sailing	White Flag with "Olympic Family" green

- 17.2 Actions by official boats or helicopters shall not be grounds for requesting redress by a boat. This changes RRS 60.1(b).

## **18. SUPPORT TEAMS (INCLUDING SUPPORT BOATS)**

- 18.1 Support Teams and Support Boats will be required to comply with local legislation and the rules.

## **19. [SP] [NP] IDENTIFICATION AND ADVERTISING WHILE RACING**

- 19.1 When provided by the Organizing Authority, boats or competitors shall carry, display or wear the following as instructed:
- 19.1.1 Bibs for all athletes;
  - 19.1.2 Coloured bibs for Event leaders (1<sup>st</sup>, 2<sup>nd</sup> and 3<sup>rd</sup>);
  - 19.1.3 Coloured dots on the mainsail for Event leaders (1<sup>st</sup>, 2<sup>nd</sup>, 3<sup>rd</sup>);

- 19.1.4 National letters;
- 19.1.5 Crew names on sails;
- 19.1.6 Event advertising;
- 19.1.7 Cameras, camera dummies, mounts, sound equipment or positioning systems;
- 19.1.8 Country flags on mainsails.

## **20. SCORING**

- 20.1 The Low Point System of RRS Appendix A will apply. RRS B8 is deleted.
- 20.2 When fewer than three opening series races have been completed, a boat's series score will be the total of her race scores. When three or more opening series races have been completed, a boat's series score will be the total of her race scores excluding her worst score. However, the score from any Medal Race will not be excluded.
- 20.3 A boat starting later than 4 minutes after her starting signal will be scored Did Not Start. This changes RRS A4 and A5.
- 20.4 One race is required to be completed to constitute a regatta.
- 20.5 Medal race:
  - 20.5.1 For the Medal Race RRS A4.1 is changed so that the points are doubled. RRS A4.2 is changed so that the scores are based on the number of boats assigned in that race and then doubled.
  - 20.5.2 For boats assigned to compete in the medal race, ties will be broken by the Medal Race score. This changes RRS A8. For tied boats with the same points score in the Medal Race, ties will be broken applying RRS A8 to the opening series scores.
  - 20.5.3 The boats competing in the medal race shall be ranked highest in the regatta. This may not apply to a boat disqualified under RRS 5, 6, 69 or World Sailing Regulations 19 or 35.
  - 20.5.4 A boat assigned to compete in the Medal Race shall make a genuine effort to start, sail the course and finish. The penalty for a breach of this instruction will be ranking the boat tenth in the regatta. If there are two such boats, they will be ranked ninth and tenth, in order of their opening-series ranks, and so on. This changes RRS A2 and A5.
- 20.6 To request a correction of an alleged error in posted race or series results, a boat may complete a scoring enquiry form available at the Sports Information Desk.

## **21. PROTESTS, PENALTIES AND REQUESTS FOR REDRESS**

- 21.1 Protest forms are available at the jury office. Protests and requests for redress or reopening shall be delivered to the jury office within the appropriate time limit.
- 21.2 For each Event, the protest time limit after the last boat has finished the last race of the day is:

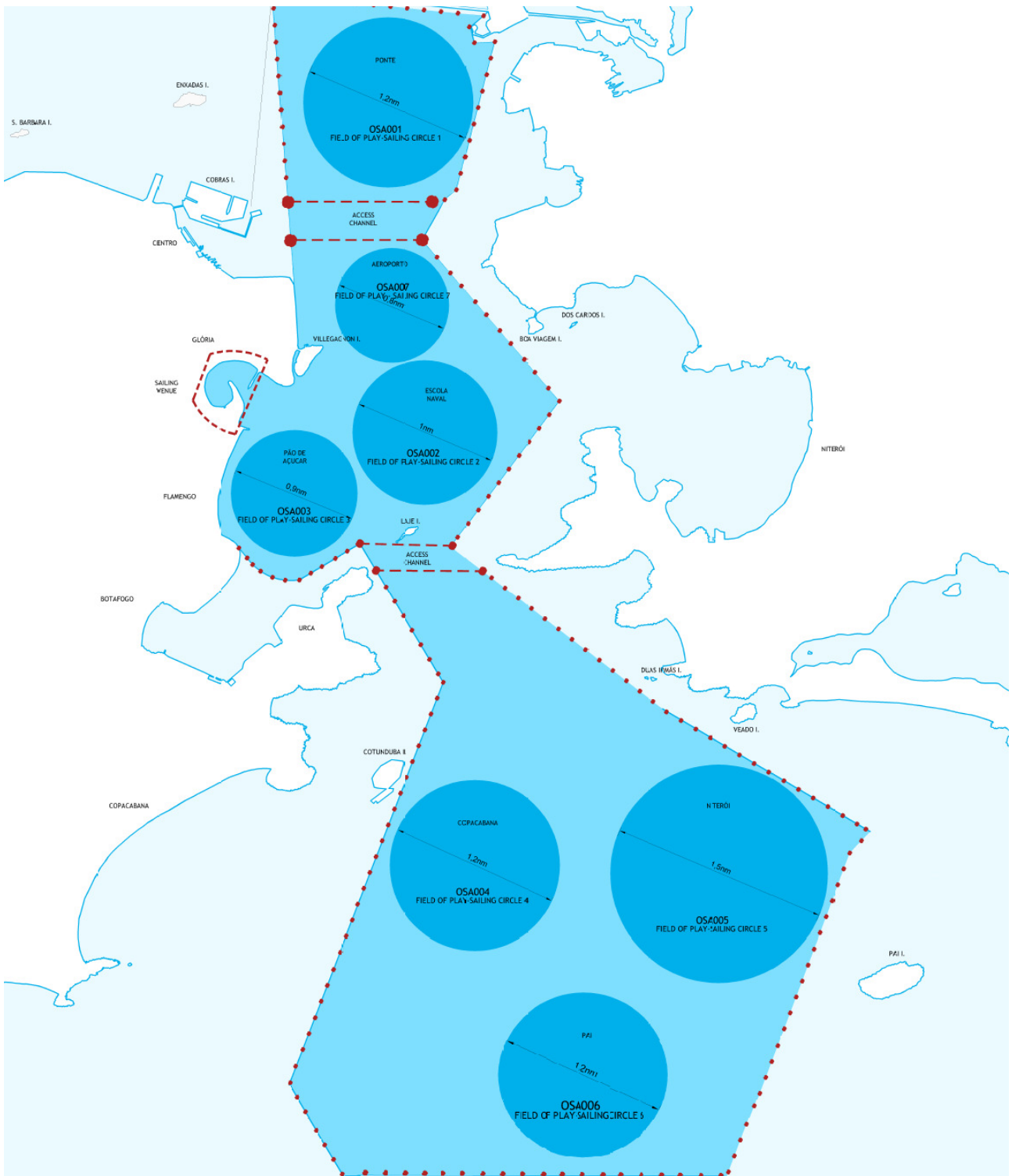
Race Area	Protest time limit in minutes
Pão de Açúcar, Aeroporto and Escola Naval	60
Ponte	75
Copacabana, Niterói and Pai	90

- 21.3 Notices will be posted within 30 minutes of the protest time limit to inform competitors of hearings in which they are parties or named as witnesses. Hearings will be held in the jury office beginning at the time posted. Hearings may be scheduled to begin up to 30 minutes before the end of protest time.
- 21.4 Notices of protests by the Race Committee, Equipment Inspection Committee or International Jury will be posted to inform boats under RRS 61.1(b).
- 21.5 A list of boats that have been penalized under Appendix P for breaking RRS 42 and under SI 21.8 will be posted.
- 21.6 Penalties for breaches of NoR 14 (Equipment & Equipment Inspection), NoR Appendix 4 (Rio 2016 Equipment Limitations), the ER, AMG, CAR, class rules, or rules in the NoR and SIs marked [DP] or [SP] in the event of a hearing, are at the discretion of the International Jury.
- 21.7 Breaches of NoR 14 (Equipment & Equipment Inspection) and NoR 21 (Insurance) or rules in the SIs marked [NP] will not be grounds for a protest by a boat. This changes RRS 60.1(a).
- 21.8 For breaches of a rule marked [SP], the Race Committee may apply a standard penalty without a hearing or a discretionary penalty may be applied by the International Jury with a hearing. A list of these breaches and the associated standard penalties will be posted on the Official Notice Board. However, the Race Committee may protest a boat when they consider the standard penalty to be inappropriate. A boat that has been penalised with a standard penalty can neither be protested for the same incident by another boat nor can another boat request redress for this race committee action. This changes RRS 60.1, 63.1 and Appendix A5.
- 21.9 When a penalty is given under SI 21.6 or SI 21.8 before a race is started, the penalty will remain if that race is restarted or resailed. This changes RRS 36.
- 21.10 On the last scheduled day of the opening series for each Event a request for reopening a hearing shall be delivered:
- 21.10.1 within the protest time limit if the requesting party was informed of the decision on the previous day;
- 21.10.2 no later than 30 minutes after the requesting party was informed of the decision on that day;
- This changes RRS 66.
- 21.11 On the last scheduled day of the opening series for each Event a request for redress based on a protest decision shall be delivered no later than 30 minutes after the decision was posted. This changes RRS 62.2.
- 21.12 Any penalty or score adjustment imposed on the day of a Medal Race will be notified by a notice in the launching area before Flag D is displayed for that Event, or by a notice posted on the race committee boat displaying Flag L.

## **22. [DP] RADIO COMMUNICATIONS**

A boat shall neither make radio transmissions while racing nor receive radio communications not available to all boats, except in an emergency or when using equipment provided by the Race Committee. This restriction also applies to mobile telephones.

## SI Addendum A Course Areas



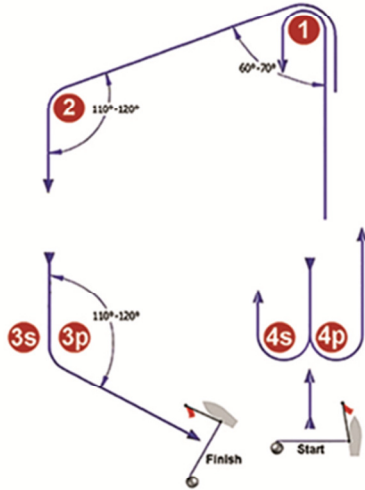
**SI Addendum B  
Race Schedule**

	<b>Monday 8 August</b>		<b>Tuesday 9 August</b>		<b>Wednesday 10 August</b>		<b>Thursday 11 August</b>		<b>Friday 12 August</b>		<b>Saturday 13 August</b>	
	<b>Race Area Warning Signal</b>	<b>#</b>	<b>Race Area Warning Signal</b>	<b>#</b>	<b>Race Area Warning Signal</b>	<b>#</b>	<b>Race Area Warning Signal</b>	<b>#</b>	<b>Race Area Warning Signal</b>	<b>#</b>	<b>Race Area Warning Signal</b>	<b>#</b>
<b>Men's Windsurfer</b>	Pão de Açucar 1300	3	Escola Naval 1310	3	Reserve Day		Niterói 1300	3	Escola Naval 1310	3	Reserve Day	
<b>Women's Windsurfer</b>	Pão de Açucar 1310	3	Escola Naval 1300	3	Reserve Day		Niterói 1310	3	Escola Naval 1300	3	Reserve Day	
<b>Men's One Person Dinghy</b>	Escola Naval 1300	2	Ponte 1310	2	Copacabana 1300	2	Reserve Day		Copacabana 1310	2	Pão de Açucar / Niterói 1300	2
<b>Women's One Person Dinghy</b>	Escola Naval 1310	2	Ponte 1300	2	Copacabana 1310	2	Reserve Day		Copacabana 1300	2	Pão de Açucar / Niterói 1310	2
<b>Men's One Person Dinghy Heavyweight</b>			Pão de Açucar 1300	2	Niterói 1300	2	Escola Naval 1300	2	Reserve Day		Copacabana 1300	2
<b>Men's Two Person Dinghy</b>					Escola Naval 1300	2	Pão de Açucar / Ponte 1310	2	Niterói 1300	2	Reserve Day	
<b>Women's Two Person Dinghy</b>					Escola Naval 1310	2	Pão de Açucar / Ponte 1300	2	Niterói 1310	2	Reserve Day	
<b>Men's Skiff</b>									Pão de Açucar 1300	3	Aeroporto 1300	3
<b>Women's Skiff</b>									Aeroporto 1300	3	Escola Naval 1300	3
<b>Mixed Multihull</b>					Pão de Açucar 1300	3	Copacabana 1300	3	Reserve Day		Ponte 1300	3

	Sunday 14 August		Monday 15 August		Tuesday 16 August		Wednesday 17 August		Thursday 18 August		Friday 19 August	
	Race Area Warning Signal	#	Race Area Warning Signal	#	Race Area Warning Signal	#	Race Area Warning Signal	#	Race Area Warning Signal	#	Race Area Warning Signal	#
<b>Men's Windsurfer</b>	Pão de Açucar 1300	1	Reserve Day									
<b>Women's Windsurfer</b>	Pão de Açucar 1400	1	Reserve Day									
<b>Men's One Person Dinghy</b>	Reserve Day		Pão de Açucar 1400	1	Reserve Day							
<b>Women's One Person Dinghy</b>	Reserve Day		Pão de Açucar 1300	1	Reserve Day							
<b>Men's One Person Dinghy Heavyweight</b>	Niterói 1300	2	Reserve Day		Pão de Açucar 1300	1	Reserve Day					
<b>Men's Two Person Dinghy</b>	Copacabana 1310	2	Escola Naval 1300	2	Reserve Day		Pão de Açucar 1400	1	Reserve Day			
<b>Women's Two Person Dinghy</b>	Copacabana 1300	2	Escola Naval 1310	2	Reserve Day		Pão de Açucar 1300	1	Reserve Day			
<b>Men's Skiff</b>	Reserve Day		Copacabana 1300	3	Escola Naval 1300	3	Reserve Day		Pão de Açucar 1300	1	Reserve Day	
<b>Women's Skiff</b>	Reserve Day		Niterói 1300	3	Aeroporto / Pão de Açucar 1300	3	Reserve Day		Pão de Açucar 1400	1	Reserve Day	
<b>Mixed Multihull</b>	Escola Naval 1300	3	Reserve Day		Pão de Açucar 1400	1	Reserve Day					

## SI Addendum C Course Diagrams

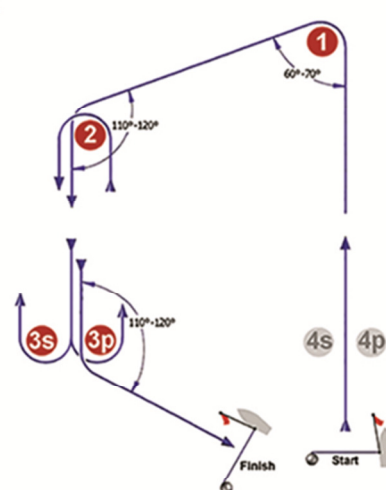
**I**



Course: Inner Trapezoid

Signal	Mark Rounding Order
I2	Start - 1 - 4s/4p - 1 - 2 - 3p - Finish
I3	Start - 1 - 4s/4p - 1 - 4s/4p - 1 - 2 - 3p - Finish
I4	Start - 1 - 4s/4p - 1 - 4s/4p - 1 - 4s/4p - 1 - 2 - 3p - Finish

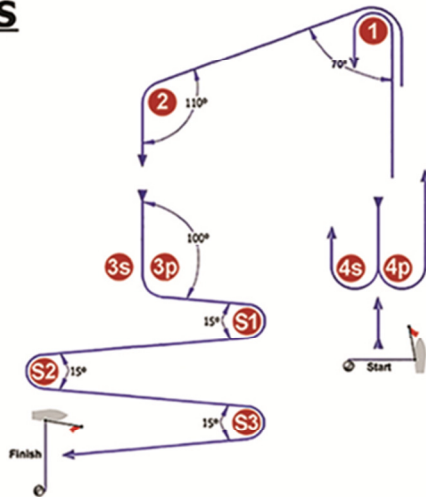
**O**



Course: Outer Trapezoid

Signal	Mark Rounding Order
O2	Start - 1 - 2 - 3s/3p - 2 - 3p - Finish
O3	Start - 1 - 2 - 3s/3p - 2 - 3s/3p - 2 - 3p - Finish
O4	Start - 1 - 2 - 3s/3p - 2 - 3s/3p - 2 - 3s/3p - 2 - 3p - Finish

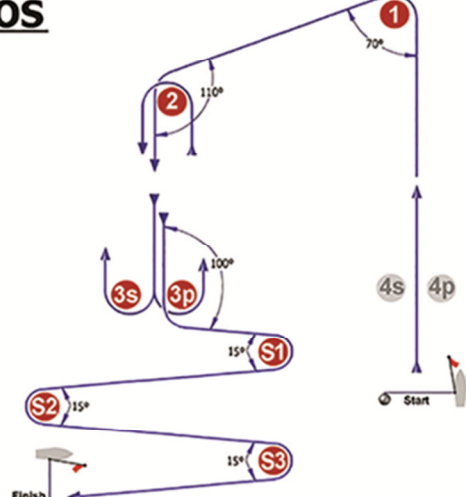
**IS**



Course: Inner Slalom

Signal	Mark Rounding Order
IS2	Start - 1 - 4s/4p - 1 - 2 - 3p - S1 - S2 - S3 - Finish
IS3	Start - 1 - 4s/4p - 1 - 4s/4p - 1 - 2 - 3p - S1 - S2 - S3 - Finish
IS4	Start - 1 - 4s/4p - 1 - 4s/4p - 1 - 4s/4p - 1 - 2 - 3p - S1 - S2 - S3 - Finish

**OS**



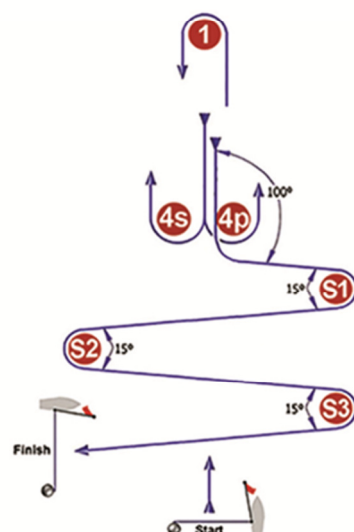
Course: Outer Slalom

Signal	Mark Rounding Order
OS2	Start - 1 - 2 - 3s/3p - 2 - 3p - S1 - S2 - S3 - Finish
OS3	Start - 1 - 2 - 3s/3p - 2 - 3s/3p - 2 - 3p - S1 - S2 - S3 - Finish
OS4	Start - 1 - 2 - 3s/3p - 2 - 3s/3p - 2 - 3s/3p - 2 - 3p - S1 - S2 - S3 - Finish

**L**

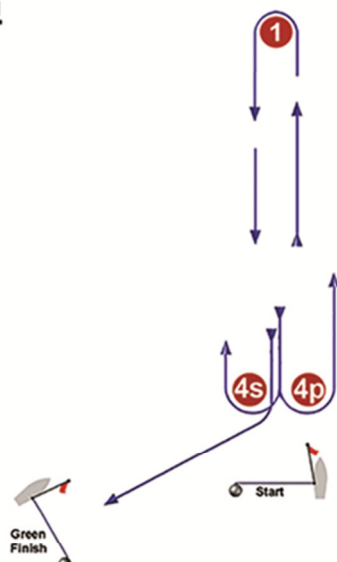
Course: Windward / Leeward

Signal	Mark Rounding Order
L2	Start - 1 - 4s/4p - 1 - Finish
L3	Start - 1 - 4s/4p - 1 - 4s/4p - 1 - Finish
L4	Start - 1 - 4s/4p - 1 - 4s/4p - 1 - 4s/4p - 1 - Finish

**LS**

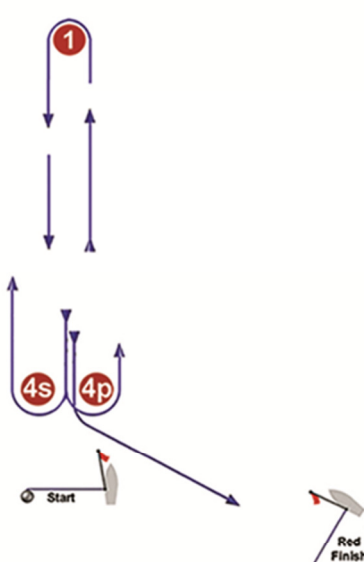
Course: Windward/Leeward With Slalom Finish

Signal	Mark Rounding Order
LS2	Start - 1 - 4s/4p - 1 - 4p - S1 - S2 - S3 - Finish
LS3	Start - 1 - 4s/4p - 1 - 4s/4p - 1 - 4p - S1 - S2 - S3 - Finish
LS4	Start - 1 - 4s/4p - 1 - 4s/4p - 1 - 4s/4p - 1 - 4p - S1 - S2 - S3 - Finish

**LG**

Course: Windward / Leeward

Signal	Mark Rounding Order
LG2	Start - 1 - 4s/4p - 1 - 4s - Finish
LG3	Start - 1 - 4s/4p - 1 - 4s/4p - 1 - 4s - Finish
LG4	Start - 1 - 4s/4p - 1 - 4s/4p - 1 - 4s/4p - 1 - 4s - Finish

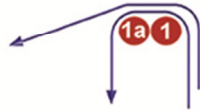
**LR**

Course: Windward / Leeward

Signal	Mark Rounding Order
LR2	Start - 1 - 4s/4p - 1 - 4p - Finish
LR3	Start - 1 - 4s/4p - 1 - 4s/4p - 1 - 4p - Finish
LR4	Start - 1 - 4s/4p - 1 - 4s/4p - 1 - 4s/4p - 1 - 4p - Finish



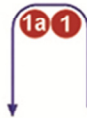
## IA



Course: Same As Course I Except with Offset Mark 1A

Signal	Mark Rounding Order
IA2	Start - 1 - 1a - 4s/4p - 1 - 1a - 2 - 3p - Finish
IA3	Start - 1 - 1a - 4s/4p - 1 - 1a - 4s/4p - 1 - 1a - 2 - 3p - Finish
IA4	Start - 1 - 1a - 4s/4p - 1 - 1a - 4s/4p - 1 - 1a - 4s/4p - 1 - 1a - 2 - 3p - Finish

## LA



Course: Same As Course L Except with Offset Mark 1A

Signal	Mark Rounding Order
LA2	Start - 1 - 1a - 4s/4p - 1 - 1a - Finish
LA3	Start - 1 - 1a - 4s/4p - 1 - 1a - 4s/4p - 1 - 1a - Finish
LA4	Start - 1 - 1a - 4s/4p - 1 - 1a - 4s/4p - 1 - 1a - 4s/4p - 1 - 1a - Finish

## LGA



Course: Same as LG Except With Offset Mark 1a

Signal	Mark Rounding Order
LGA2	Start - 1 - 1a - 4s/4p - 1 - 1a - 4s - Finish
LGA3	Start - 1 - 1a - 4s/4p - 1 - 1a - 4s/4p - 1 - 1a - 4s - Finish
LGA4	Start - 1 - 1a - 4s/4p - 1 - 1a - 4s/4p - 1 - 1a - 4s/4p - 1 - 1a - 4s - Finish

## LRA



Course: Same as LR Except With Offset Mark 1a

Signal	Mark Rounding Order
LRA2	Start - 1 - 1a - 4s/4p - 1 - 1a - 4p - Finish
LRA3	Start - 1 - 1a - 4s/4p - 1 - 1a - 4s/4p - 1 - 1a - 4p - Finish
LRA4	Start - 1 - 1a - 4s/4p - 1 - 1a - 4s/4p - 1 - 1a - 4s/4p - 1 - 1a - 4p - Finish

## **Addendum Q**

### **Unpiied Fleet Racing**

This addendum has been approved by ISAF in accordance with rule 86.2 and ISAF Regulation 28.1.3.

**Version:** January 21, 2013

*Marginal marks indicate important changes from the previous version.*

These sailing instructions change the definition Proper Course, and rules 20, 28.2, 44, 60, 61, 62, 63, 64.1, 65, 66, 70, 78.3 and B5.

#### **Q1 CHANGES TO RACING RULES**

*Additional changes to rules are made in instructions Q2, Q3, Q4, and Q5.*

##### **Q1.1 Changes to the Definitions and the Rules of Part 2 and Part 4**

- (a) Add to the definition Proper Course: 'A boat taking a penalty or manoeuvring to take a penalty is not sailing a *proper course*.'
- (b) When rule 20 applies, the following arm signals are required in addition to the hails:
  - (1) for 'Room to tack', repeatedly and clearly pointing to windward; and
  - (2) for 'You tack', repeatedly and clearly pointing at the other boat and waving the arm to windward.

Instruction Q1.1(b) does not apply to boards.

##### **Q1.2 Changes to Rules Involving Protests, Requests for Redress, Penalties and Exoneration**

- (a) The first sentence of rule 44.1 is replaced with: 'A boat may take a One-Turn Penalty when she may have broken a rule of Part 2 (except rule 14 when she has caused damage or injury) or rule 31 or 42 while *racing*.'
- (b) For boards, the One-Turn Penalty is one 360° turn with no requirement for a tack or a gybe.
- (c) Rule 60.1 is replaced with 'A boat may protest another boat or request redress provided she complies with instructions Q2.1 and Q2.4.'
- (d) The third sentence of rule 61.1(a) and all of rule 61.1(a)(2) are deleted. Rule B5 is deleted.
- (e) Rules 62.1(a), (b) and (d) are deleted. In a race where this addendum applies, there shall be no scoring adjustments for redress given under any of these rules for a previous race.
- (f) Rule 64.1(a) is changed so that the provision for exonerating a boat may be applied by the umpires without a hearing, and it takes precedence over any conflicting instruction of this addendum.
- (g) Rules P1 to P4 shall not apply.

#### **Q2 PROTESTS AND REQUESTS FOR REDRESS BY BOATS**

- Q2.1** While racing, a boat may protest another boat under a rule of Part 2 (except rule 14) or under rule 31 or 42; however, a boat may only protest under a rule of Part 2 for an incident in which she was involved. To do so she shall hail 'Protest' and conspicuously display a red flag at the first reasonable opportunity for each. She shall remove the flag before, or at

the first reasonable opportunity after a boat involved in the incident has taken a penalty voluntarily or after an umpire's decision. However, a board need not display a red flag.

**Q2.2** A boat that protests as provided in instruction Q2.1 is not entitled to a hearing. Instead, a boat involved in the incident may acknowledge breaking a rule by taking a One-Turn Penalty as described in rule 44.2. If the protested boat does not take a penalty voluntarily, an umpire will decide whether to penalize any boat and signal the decision as provided in instruction Q3.1.

**Q2.3** At the finishing line, the race committee will inform the competitors about each boat's finishing place or scoring abbreviation. After this has been done for all boats, the race committee will promptly display flag B with one sound. Two minutes later flag B will be removed with one sound.

**Q2.4** A boat intending to

- (a) protest another boat under a rule other than instruction Q3.2 or Q4.2(a), or a rule listed in instruction Q2.1,
- (b) protest another boat under rule 14 if there was contact that caused damage or injury, or
- (c) request redress

shall hail the race committee before or during the display of flag B. The same time limit applies to protests under instructions Q5.4 and Q5.5. The protest committee may extend the time limit if there is good reason to do so.

**Q2.5** The race committee will promptly inform the protest committee about any protests or requests for redress made under instruction Q2.4.

### **Q3 UMPIRE SIGNALS AND IMPOSED PENALTIES**

**Q3.1** An umpire will signal a decision as follows:

- (a) A green and white flag with one long sound means 'No penalty.'
- (b) A red flag with one long sound means 'A penalty is imposed or remains outstanding.' The umpire will hail or signal to identify each such boat.
- (c) A black flag with one long sound means 'A boat is disqualified.' The umpire will hail or signal to identify the boat disqualified.

**Q3.2** (a) A boat penalized under instruction Q3.1(b) shall take a One-Turn Penalty as described in rule 44.2.

(b) A boat disqualified under instruction Q3.1(c) shall promptly leave the course area.

### **Q4 PENALTIES AND PROTESTS INITIATED BY AN UMPIRE; ROUNDING OR PASSING MARKS**

**Q4.1** When a boat

- (a) breaks rule 31 and does not take a penalty,
- (b) breaks rule 42,
- (c) gains an advantage despite taking a penalty,
- (d) deliberately breaks a rule,
- (e) commits a breach of sportsmanship, or

- (f) fails to comply with instruction Q3.2 or to take a penalty when required to do so by an umpire,

an umpire may penalize her without a protest by another boat. The umpire may impose one or more One-Turn Penalties to be taken as described in rule 44.2, each signalled in accordance with instruction Q3.1(b), or disqualify her under instruction Q3.1(c), or report the incident to the protest committee for further action. If a boat is penalized under instruction Q4.1(f) for not taking a penalty or taking a penalty incorrectly, the original penalty is cancelled.

- Q4.2** (a) A boat shall not round or pass a mark on the wrong side. If she does so, she may correct her error as provided in rule 28.2 only if she does so before she rounds or passes the next mark or finishes.  
(b) When a boat breaks instruction Q4.2(a) and fails to correct her error before rounding or passing the next mark or finishing, an umpire may disqualify her under instruction Q3.1(c).

- Q4.3** An umpire who decides, based on his own observation or a report received from any source, that a boat may have broken a rule, other than instruction Q3.2 or Q4.2(a) or a rule listed in instruction Q2.1, may inform the protest committee for its action under rule 60.3. However, he will not inform the protest committee of an alleged breach of rule 14 unless there is damage or injury.

## **Q5 PROTESTS; REQUESTS FOR REDRESS OR REOPENING; APPEALS; OTHER PROCEEDINGS**

- Q5.1** No proceedings of any kind may be taken in relation to any action or non-action by an umpire.
- Q5.2** A boat may not base an appeal on an alleged improper action, omission or decision of the umpires or the protest committee. In rule 66 the third sentence is changed to '*A party to the hearing may not ask for a reopening.*'
- Q5.3** (a) Protests and requests for redress need not be in writing.  
(b) The protest committee may take evidence and conduct the hearing in any way it considers appropriate and may communicate its decision orally.  
(c) If the protest committee decides that a breach of a rule has had no effect on the outcome of the race, it may impose a penalty of points or fraction of points or make another arrangement it decides is equitable, which may be to impose no penalty.
- Q5.4** The race committee will not protest a boat, except following a report under rule 43.1(c) or 78.3.
- Q5.5** The protest committee may protest a boat under rule 60.3. However, it will not protest a boat for breaking instruction Q3.2 or Q4.2(a), a rule listed in instruction Q2.1, or rule 14 unless there is damage or injury.